

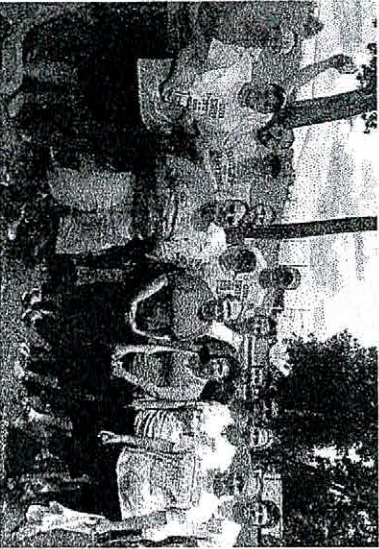
The District is a subdivision of the state of Ohio, and is assisted by the Butler County Commissioners, the Ohio Soil & Water Conservation Commission, and the Ohio Department of Natural Resources through the Division of Soil and Water Resources (formerly the Division of Soil and Water Conservation). Technical assistance for conservation practices is provided without charge by the Butler SWCD through the United States Department of Agriculture and Natural Resource Conservation Service (NRCS) personnel. The objectives of the Butler SWCD include:

- Reduce soil erosion loss on both urban and agricultural lands.
- Improve water quality by serving as a resource base for water quality data and educating the public concerning storm water management and erosion control.
- To increase both the rural and urban communities' awareness of the value, need, and ways of conserving our natural resources.
- Promote woodland and wildlife management by local landowners.
- Conduct a strong informational and educational program in the schools and with the general public.
- Provide adequate funding, personnel and equipment to meet the future needs of district operations.

WWW.BUTLERSWCD.ORG

River Clean Ups

Litter is a prominent pollutant in our local watershed that not only is unattractive to look at, but also unhealthy for our aquatic habitats. In order to remove some of our waste from waterways, the Butler SWCD office helps coordinate cleanups throughout the year. Regional cleanups in need of more volunteers include the Great Miami River (late October), Mill Creek (early October), and Whitewater River (June). T-shirts, water, snacks and good company are available for event volunteers.



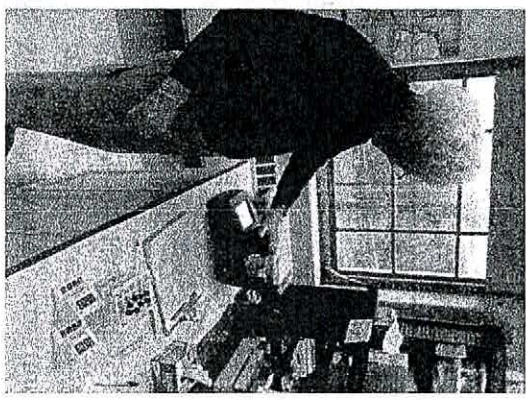
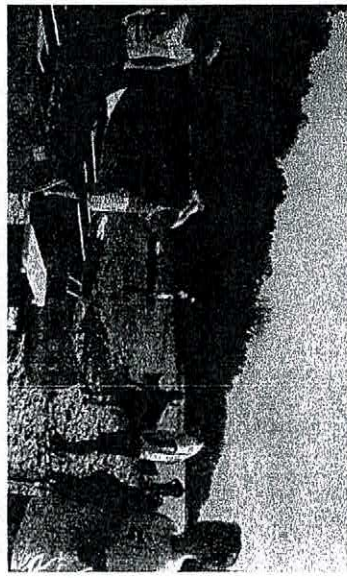
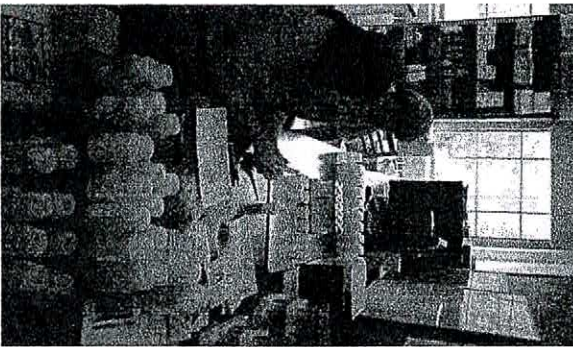
Storm Drain Labeling

Most of the storm drains in Butler County are not collected to the water treatment facility. Instead, this water simply enters into the nearest creek or pond. Often this rain water picks up pollutants along the way such as motor oil, pet waste, litter, and takes it on the same journey to the creek. Sometimes people even put used oil and paint straight down the storm drain thinking it will be cleaned. We work with the Butler County Storm Water District to provide you all of the supplies that you need to label your neighborhood. You can label as large or as small an area that you choose. You can go out anytime the weather is just right (not extremely hot or cold).



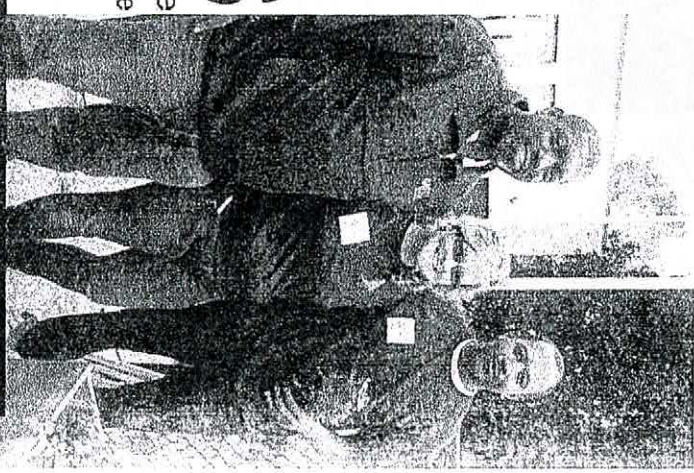
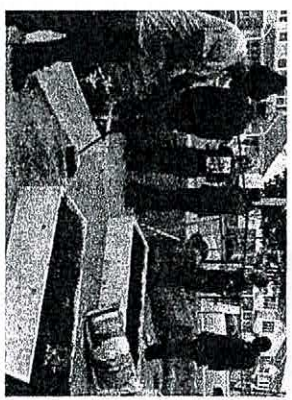
Butler County Stream Team

Stream Team volunteers help to monitor the water quality in our local streams and rivers. We have monitors that study the biology of the creek which means they go exploring for baby dragonflies, dobsonfly larvae and more. The ecological make up of a stream can help us to understand the level of pollution in that water-body. Once a month, we also have volunteers collect samples for testing the chemistry of the water, and last but not least we even have volunteers that run the chemical tests in a Miami University Oxford laboratory. To learn how to get involved in this monthly sampling effort, visit www.butlercountystreamteam.org.



Earth Team Volunteers

Earth Team is a volunteer program ran by the USDA Natural Resources Conservation Service (NRCS). When you sign up as an Earth Team Volunteer, you are on your way to becoming a caretaker of natural resources in your community. When you volunteer you may assist with improving wildlife habitat, providing conservation education to adults and students, community outreach and many more interesting opportunities. For more information on this great program visit <http://www.nrcs.usda.gov/wps/portal/nrcs/main/national/people/volunteers/>.



USDA
NRCS

U.S. Department of Agriculture
Natural Resources Conservation Service

NATIONAL ECOLOGY FOUNDATION
EARTH TEAM VOLUNTEERS

Volunteers improve
TODAY for
TOMORROW